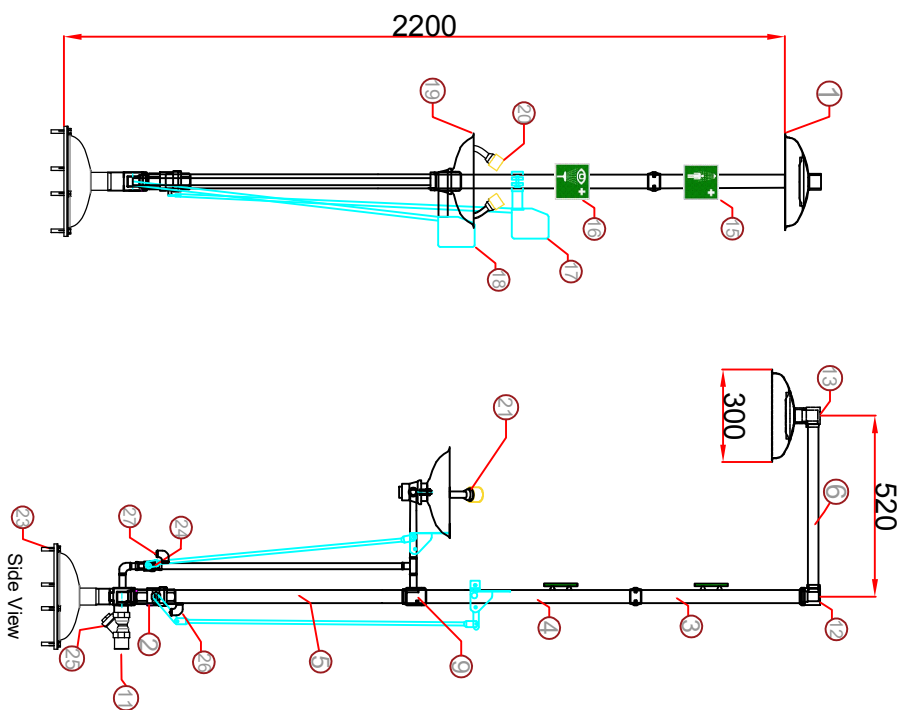


15031000-SD-316 Technical Drawings

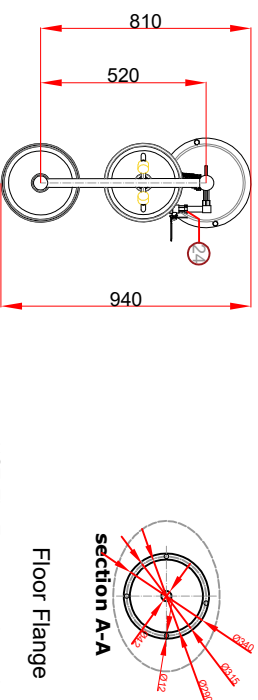
DOCUMENT NO	TC.02.002
REVISION NO	00
REVISION DATE	--
RELEASE DATE	30.06.2021



NO.	DESCRIPTION	MATERIAL
27	Water Drain for Eyewash	Plastic
26	Water Drain for shower	Plastic
25	1" Filter	3/16 STAINLESS STEEL
24	1/2" Ball Valve for eyeface wash	3/16 STAINLESS STEEL
23	M10x45 Hole in Bolt(4 piece)	3/16 STAINLESS STEEL
21	Spray Nozzles	Brass
20	Dust Cover on Eyewash Spray	Plastic
19	Eyewash Bowl	3/16 STAINLESS STEEL
18	Push Handle Control for Eyewash	3/16 STAINLESS STEEL
17	Push Handle Control for Shower	3/16 STAINLESS STEEL
16	Eyeface wash sign	Phosphorus
15	Emergency shower sign	Phosphorus
13	Shower Head Fitting	3/16 STAINLESS STEEL
12	Top Corner Fitting	3/16 STAINLESS STEEL
11	1" Water Inlet	3/16 STAINLESS STEEL
10	Middle connection	3/16 STAINLESS STEEL
9	Main Connection fitting	3/16 STAINLESS STEEL
6	1" 500 mm pipe	3/16 STAINLESS STEEL
5	1 1/4" 740 mm pipe	3/16 STAINLESS STEEL
4	1 1/4" 590 mm pipe	3/16 STAINLESS STEEL
3	1 1/4" 660 mm pipe	3/16 STAINLESS STEEL
2	1" Ball Valve	3/16 STAINLESS STEEL
1	Shower head Bowl (Ø300mm)	3/16 STAINLESS STEEL

Standards: EN 15154-1-2
ANSI/ISEA Z358.1-2014
Water Flow: 75.7 lt / min for Shower
11,4 lt / min for eye/face wash
Total Weight: 21,6 kgs
Packed Dimensions: 35x83x21 cm

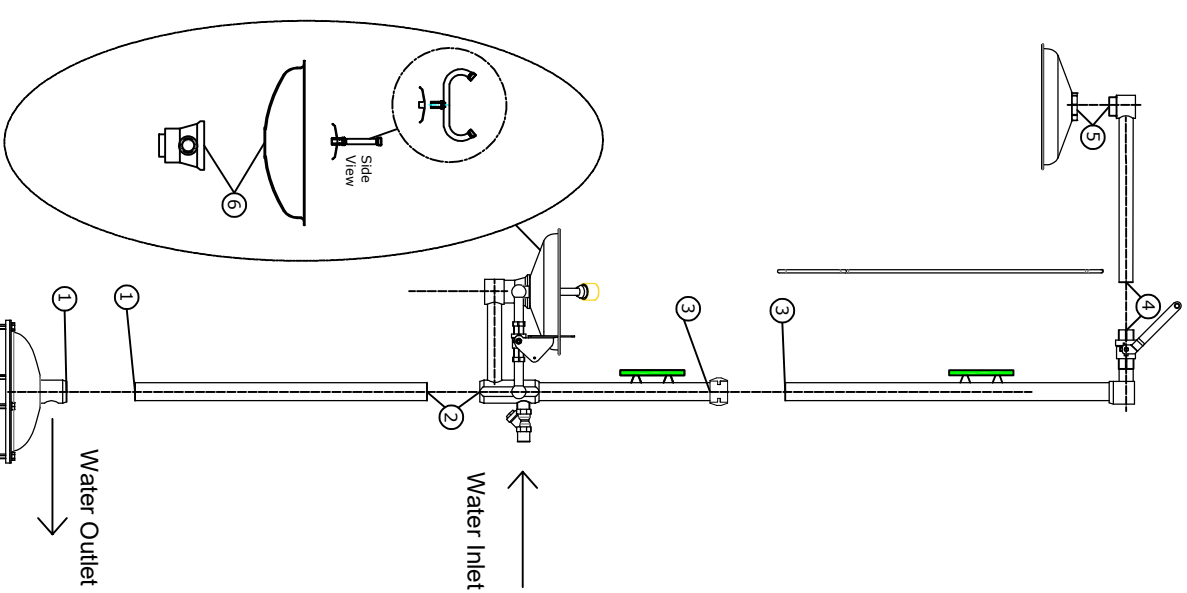
Static test pressure : 7 bar
Min using pressure : 1,4 bar
Max using pressure : 2,8 bar



NOT: The Emergency shower is mounted on the floor with a M10x45 hole in bolts and dowels.

Bolts and dowels will be sent with the product:

- 4 piece hole in anchor bolts
- 4 piece dowels

[illegible]

- 1) Screw number 1 pieces together. (1-1)
- 2) Screw number 2 pieces together. (2-2)
- 3) Screw number 3 pieces together. (3-3)
- 4) Screw number 4 pieces together. (4-4)
- 5) Screw number 5 pieces together. (5-5)
- 6) Eyewash dish screwed to low and (6-6), eyewash screwed on the middle of the eyewash dish and connected completely. Spray nozzles must be to run parallel with person who see in front of shower.
- 7) Please use impermeability teflon bands at pipe connection points
- 8) The shower which is finished assembly is connected pedestal by 4 holes that are on pedestal connecting part. For the connecting could use M10x45 hole in anchor bolt steel plugs.
- 9) The shower can directly connected to water network by 1" water inlet.
- 10) You can drain the waste water by connecting a suitable 1" diameter pipe or hose to the waste water outlet.

PREPARED

APPROVED

Çağkan TOPCU

Serdar TÜRKÜÇAR