

# ISTEC®

## SHOWERS & EYEBATHS

The unit is certified according to TS EN 15154-1, TS EN 15154-2, TS EN 15154-3 and ANSI/ISEA Z358.1-2014 standards.  
Also GOST-R certified.

ISTEC TYPE ESW-OWT-1260GLV SELF-CONTAINED  
EMERGENCY SHOWER AND EYE WASH  
WITH CABINET AND 1260 L OVERHEAD  
WATER TANK  
P/N: 15041110

*Customized Unit, Cubical Type, Suitable To  
Supporting With 1260 L Water Tank For Inadequate  
Water Flow Conditions*

Main frame/Legs material : Galvanized steel  
Water tank material : Galvanized steel  
Emergency shower and eye wash material :  
304 Stainless steel

Stainless steel push handle and treadle foot activation  
for eye wash & stainless steel panic bar and GRP platform  
activation for shower.

Frame/legs material : Carbon Steel (Stainless Steel as Alternative)  
Pipes material : 304 Stainless Steel (polyurethane foam insulated and ABS jacketed)  
Shower material : 304 Stainless Steel  
Fixings material : 304 Stainless Steel  
Shower Head : 300 mm diameter, 304 Stainless Steel  
Eye wash Bowl : 300 mm diameter, 304 Stainless Steel with ABS lid and plastic dust covers  
Water Inlet : 1 1/2" 316SS flanged inlet fitted on back of tank  
Overflow drain : 1" 316SS flanged outlet fitted on back of tank  
Shower Panels (side & rear) : Green or white heavy-duty GRP panels, 3 sides

### OVERHEAD WATER TANK SPECIFICATIONS

Capacity : 1260 liter (Galvanized Steel)

Material : Polyurethane Insulated Galvanized Steel encased in green or white heavy-duty GRP panels



# ISTEC® TYPE ESW-OWT

P/N: 15041110



EAC/GOST-R



American National Standards Institute

**ANSI/ISEA Z358.1-2014  
International Standard  
Requirements**

- ✓ The required water flow should be provided when the eye/face wash fountain and emergency shower are operating at the same time.
- ✓ Stay-open valve should activate the system in a second or less and the valve must remain open until the user turns it off.
- ✓ The height of the shower head from the ground should be between 208.3 cm and 243.8 cm.
- ✓ The emergency shower should provide at least 75.7 l/min for 15 minutes on the diameter required by the standard. The water temperature should be tepid between 16-38 ° C.
- ✓ The emergency shower control should be easily accessible and visible and should not be more than 173.3 cm above the ground.
- ✓ The center of the water column should be at least 40.6 cm away from any obstruction.
- ✓ Spray nozzles must be protected by dust covers against contaminants.  
Dust covers must be opened automatically by the water flow.
- ✓ The eye/face wash fountain should deliver at least 11.4 l/min, and eye wash should deliver at least 1.5 l/min for 15 minutes. The water temperature should be tepid, between 16-38 ° C.
- ✓ Stay-open valve should activate the system in a second or less and the valve must remain open until the user turns it off.
- ✓ The control of the eye/face wash fountain should be easy to recognize and easy to find by the user.
- ✓ The water pattern should be located at a height of between 83.8 cm and 134.6 cm from the ground and 15.3 cm away from the nearest obstacle or wall.

**ISTEC®  
SHOWERS & EYEBATHS**

Minimum Ambient Operating Temperature: -20° C (-4° F)  
Maximum Ambient Operating Temperature: +40° C (104° F)

Electrical Equipment (Non-hazardous)  
Suitable for use in safe areas

Electrical Equipment (Hazardous)  
ATEX, Zone 1, IP65

Inspection hatch for maintenance purposes  
Stainless steel erecting lugs  
Visual water level indicator  
Temperature gauge

**The unit guarantees 15 minutes of constant water flow when connected to mains supply.**  
**Flow rate for shower: 75.7 l/min**  
**Flow rate for eye wash: 1.5 l/min**

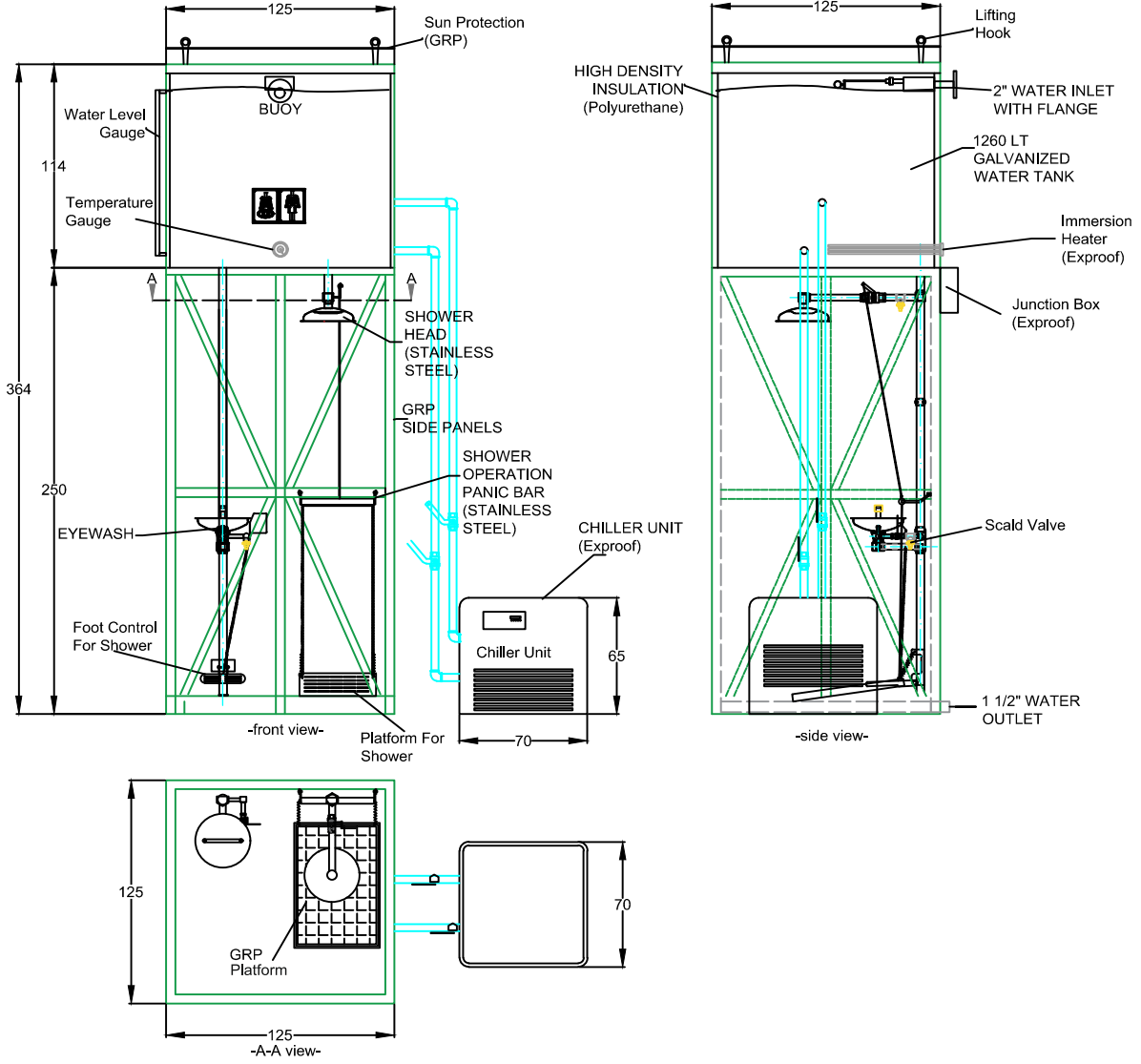
Stainless steel panic/push bar and testing lever  
GRP platform activation for shower  
4 kW ex-proof water immersion heater (ATEX II 2G Ex d IIC T3, IP65)  
Ex-proof junction box (ATEX Ex eb IIC T5 Gb, IP66)  
3 kW ex-proof chiller cooling unit (ATEX Cat 2G IIB T3, IP65)  
Scald protection valve (self-draining)  
Earthing boss  
Overhead white GRP sun canopy  
Eye wash comes complete with 2 x low-pressure chrome plated nozzles, ABS lid and yellow plastic dust covers  
All necessary safety signs  
Wooden Pallets

*24 months limited warranty and  
packing charges are included for complete unit.*

[www.ist.com.tr](http://www.ist.com.tr)

# TECHNICAL DRAWING (Model 1)

## EMERGENCY SHOWER AND EYEWASH FOUNTAINS WITH OVERHEAD GALVANIZED WATER TANK (1260LT) ISTEC Type ESW- OWT (EXPROOF ACCESSORIES)



### ACCESSORIES

- INNER HEATER (EXPROOF)
- CHILLER UNIT (EXPROOF)
- JUNCTION BOX (EXPROOF)
- TEMPERATURE GAUGE-THERMOMETER (EXPROOF)
- GALVANIZED MILD STEEL PLATFORM OPERATION
- STAINLESS STEEL PUSH BAR/PANIC BAR FOR SHOWER
- STAINLESS STEEL FOOT TREADLE FOR EYEWASH
- WATER LEVEL GAUGE
- SCALD VALVE FOR EYEWASH
- WATER INLET WITH FLANGE
- SUN PROTECTION (GRP)
- ISOLATION FOR PIPES&WATER TANK

### FEATURES

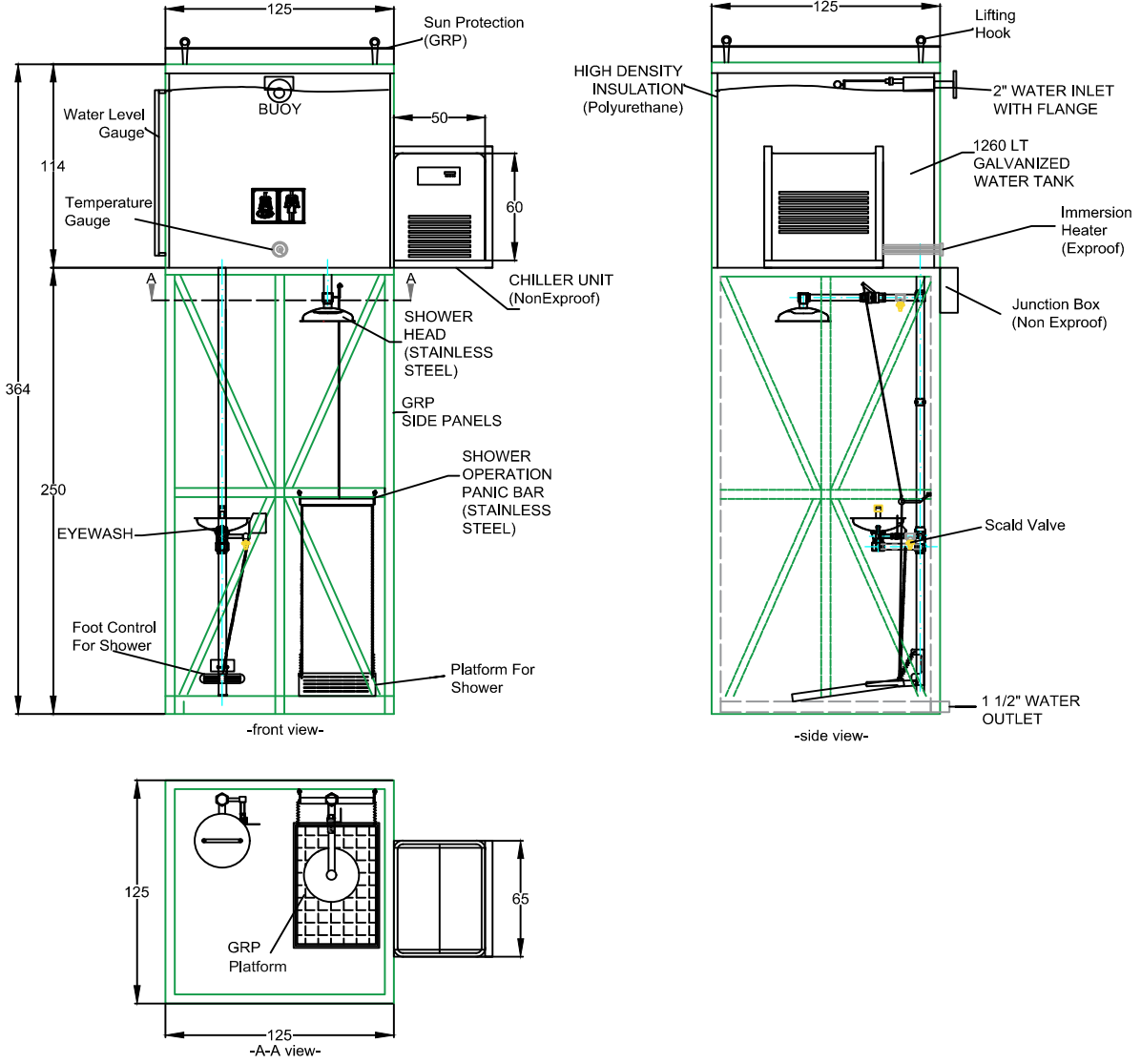
- Shower & Frame material: Stainless Steel
- Pipes: stainless Steel
- Shower Head: 300 mm diameter, Stainless Steel
- Eyewash Bowl: 300 mm diameter, Stainless Steel with ABS lid
- Water Inlet : 2" Stainless Steel Flanged inlet fitted on back of unit
- Water Outlet : 1 1/2"
- Shower Panels (side & rear): GRP panelling (3 sides)
- Overhead Water Tank Capacity : 1260 liters (Galvanized Steel)

		A		FIRST ISSUE		SS	FA	ST	CUSTOMER		
		REV.	DATE	DESCRIPTION		DESIGNED	CHECKED	APPROVED			
STATUS	FOR INFORMATION	<input type="checkbox"/>	FOR RFQ/DESIGN	<input checked="" type="checkbox"/>		DESIGNED	CHECKED	APPROVED	SIZE	SCALE	PRODUCT
	FOR REVIEW	<input type="checkbox"/>									
	FOR APPROVAL	<input type="checkbox"/>							A4	1/100	15041110
IST İsci Sağlığı Teçhizatı Sanayi ve Ticaret Ltd Sti Ostim Melih Gökçek Blv 31 Caddesi 2269 sokak 42 Ankara Türkiye 06374 www.ist.com.tr Ph 0090312 384 13 00 Fax 0090312 341 73 03						DRAWING NUMBER/DATE:		SHEET: 1 OF: 1		DRAWING NAME: EMERGENCY SHOWERS ISTEC Type ESW-OWT 15041110	



# TECHNICAL DRAWING (Model 2)

## EMERGENCY SHOWER AND EYEWASH FOUNTAINS WITH OVERHEAD GALVANIZED WATER TANK (1260LT) ISTEC Type ESW- OWT (NONEXPROOF ACCESSORIES)



### ACCESSORIES

- INNER HEATER (NON EXPROOF)
- CHILLER UNIT (NON EXPROOF)
- JUNCTION BOX (NON EXPROOF)
- TEMPERATURE GAUGE-THERMOMETER (NON EXPROOF)
- GALVANIZED MILD STEEL PLATFORM OPERATION
- STAINLESS STEEL PUSH BAR/PANIC BAR FOR SHOWER
- STAINLESS STEEL FOOT TREADLE FOR EYEWASH
- WATER LEVEL GAUGE
- SCALD VALVE
- WATER INLET WITH FLANGE
- SUN PROTECTION (GRP)
- ISOLATION FOR PIPES&WATER TANK

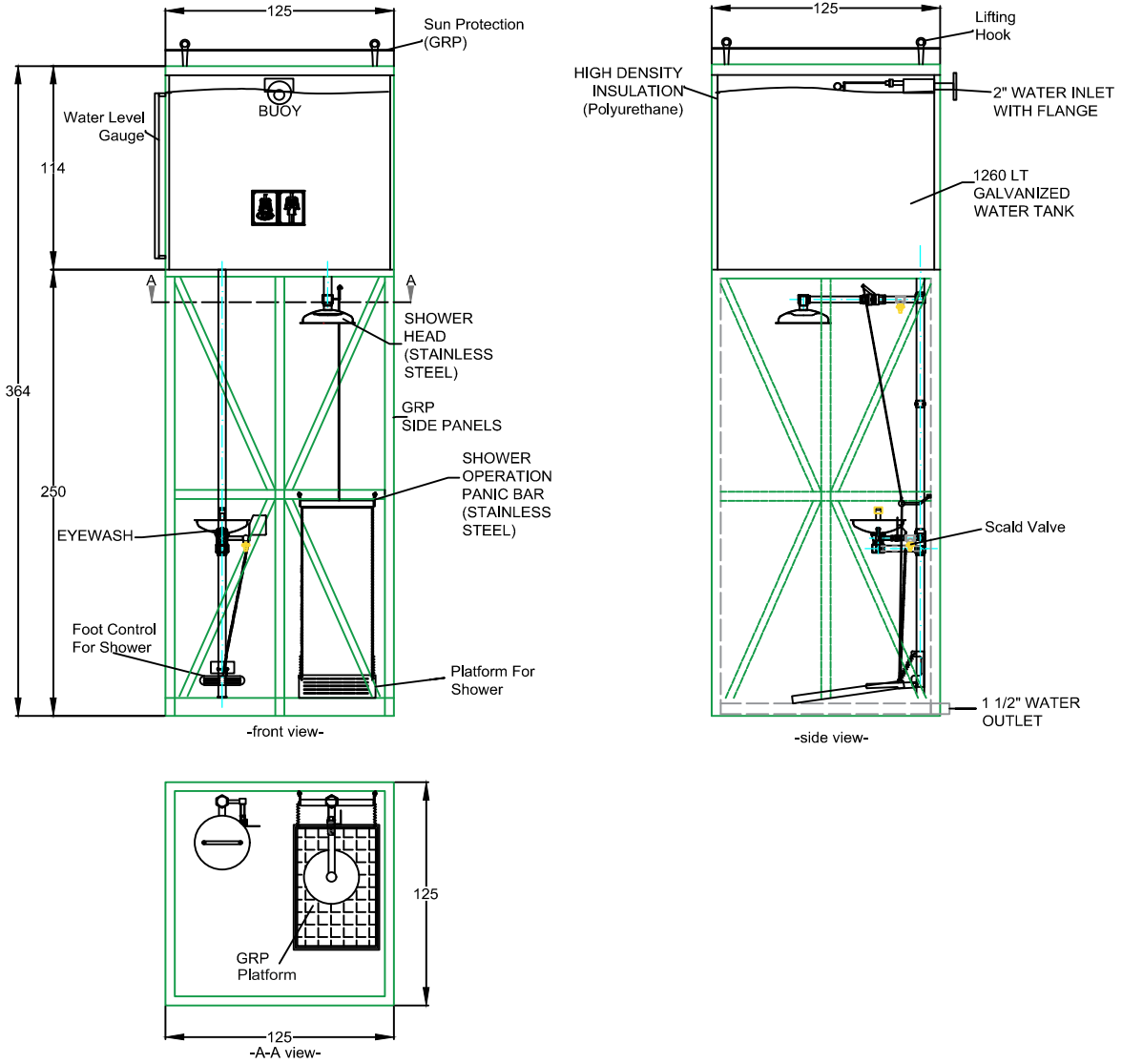
### FEATURES

- Shower & Frame material: Stainless Steel
- Pipes: stainless Steel
- Shower Head: 300 mm diameter, Stainless Steel
- Eyewash Bowl: 300 mm diameter, Stainless Steel with ABS lid
- Water Inlet : 2" Stainless Steel Flanged inlet fitted on back of unit
- Water Outlet : 1 1/2"
- Shower Panels (side & rear): GRP panelling (3 sides)
- Overhead Water Tank Capacity : 1260 liters (Galvanized Steel)

		<table border="1"> <tr> <td>REV.</td> <td>DATE</td> <td>DESCRIPTION</td> <td>DESIGNED</td> <td>CHECKED</td> <td>APPROVED</td> </tr> <tr> <td>A</td> <td></td> <td>FIRST ISSUE</td> <td>SS</td> <td>FA</td> <td>ST</td> </tr> </table>				REV.	DATE	DESCRIPTION	DESIGNED	CHECKED	APPROVED	A		FIRST ISSUE	SS	FA	ST	CUSTOMER																							
		REV.	DATE	DESCRIPTION	DESIGNED	CHECKED	APPROVED																																		
A		FIRST ISSUE	SS	FA	ST																																				
<table border="1"> <tr> <td>STATUS</td> <td>FOR INFORMATION</td> <td>FOR REVIEW</td> <td>FOR APPROVAL</td> </tr> <tr> <td></td> <td><input type="checkbox"/></td> <td><input type="checkbox"/></td> <td><input type="checkbox"/></td> </tr> </table>		STATUS	FOR INFORMATION	FOR REVIEW	FOR APPROVAL		<input type="checkbox"/>	<input type="checkbox"/>	<input type="checkbox"/>	<table border="1"> <tr> <td>FOR RFQ/DESIGN</td> <td><input checked="" type="checkbox"/></td> </tr> </table>		FOR RFQ/DESIGN	<input checked="" type="checkbox"/>	<table border="1"> <tr> <td>ORIGINAL EDITION</td> <td>SS</td> <td>FA</td> <td>ST</td> </tr> <tr> <td>DESIGNED</td> <td><input checked="" type="checkbox"/></td> <td><input checked="" type="checkbox"/></td> <td><input checked="" type="checkbox"/></td> </tr> <tr> <td>CHECKED</td> <td><input checked="" type="checkbox"/></td> <td><input checked="" type="checkbox"/></td> <td><input checked="" type="checkbox"/></td> </tr> <tr> <td>APPROVED</td> <td><input checked="" type="checkbox"/></td> <td><input checked="" type="checkbox"/></td> <td><input checked="" type="checkbox"/></td> </tr> </table>		ORIGINAL EDITION	SS	FA	ST	DESIGNED	<input checked="" type="checkbox"/>	<input checked="" type="checkbox"/>	<input checked="" type="checkbox"/>	CHECKED	<input checked="" type="checkbox"/>	<input checked="" type="checkbox"/>	<input checked="" type="checkbox"/>	APPROVED	<input checked="" type="checkbox"/>	<input checked="" type="checkbox"/>	<input checked="" type="checkbox"/>	<table border="1"> <tr> <td>SIZE</td> <td>SCALE</td> </tr> <tr> <td>A4</td> <td>1/100</td> </tr> </table>		SIZE	SCALE	A4	1/100	<table border="1"> <tr> <td>PRODUCT</td> <td>15041110</td> </tr> </table>		PRODUCT	15041110
STATUS	FOR INFORMATION	FOR REVIEW	FOR APPROVAL																																						
	<input type="checkbox"/>	<input type="checkbox"/>	<input type="checkbox"/>																																						
FOR RFQ/DESIGN	<input checked="" type="checkbox"/>																																								
ORIGINAL EDITION	SS	FA	ST																																						
DESIGNED	<input checked="" type="checkbox"/>	<input checked="" type="checkbox"/>	<input checked="" type="checkbox"/>																																						
CHECKED	<input checked="" type="checkbox"/>	<input checked="" type="checkbox"/>	<input checked="" type="checkbox"/>																																						
APPROVED	<input checked="" type="checkbox"/>	<input checked="" type="checkbox"/>	<input checked="" type="checkbox"/>																																						
SIZE	SCALE																																								
A4	1/100																																								
PRODUCT	15041110																																								
IST İsci Sağliğı Techizatı Sanayi ve Ticaret Ltd Sti Ostim Melih Gökçek Blv 31 Caddesi 2269 sokak 42 Ankara Türkiye 06374 <a href="http://www.ist.com.tr">www.ist.com.tr</a> Ph 0090312 384 13 00 Fax 0090312 341 73 03				DRAWING NUMBER/DATE: AK19012018-02-00		SHEET: 1 OF: 1		DRAWING NAME: EMERGENCY SHOWERS ISTEC Type ESW-OWT 15041110																																	

# TECHNICAL DRAWING (Model 3)

## EMERGENCY SHOWER AND EYEWASH FOUNTAINS WITH OVERHEAD GALVANIZED WATER TANK (1260LT) ISTEC Type ESW- OWT



### ACCESSORIES

- GALVANIZED MILD STEEL PLATFORM OPERATION
- STAINLESS STEEL PUSH BAR/PANIC BAR FOR SHOWER
- STAINLESS STEEL FOOT TREADLE FOR EYEWASH
- WATER LEVEL GAUGE
- SCALD VALVE
- WATER INLET WITH FLANGE
- SUN PROTECTION (GRP)
- ISOLATION FOR PIPES&WATER TANK

### FEATURES

- Shower & Frame material: Stainless Steel
- Pipes: stainless Steel
- Shower Head: 300 mm diameter, Stainless Steel
- Eyewash Bowl: 300 mm diameter, Stainless Steel with ABS lid
- Water Inlet : 2" Stainless Steel Flanged inlet fitted on back of unit
- Water Outlet : 1 1/2"
- Shower Panels (side & rear): GRP panelling (3 sides)
- Overhead Water Tank Capacity : 1260 liters (Galvanized Steel)

		A		FIRST ISSUE		SS	FA	ST	CUSTOMER	
		REV.	DATE	DESCRIPTION		DESIGNED	CHECKED	APPROVED		
STATUS FOR INFORMATION FOR REVIEW FOR APPROVAL	<input type="checkbox"/> FOR RFQ/DESIGN <input checked="" type="checkbox"/>	<input type="checkbox"/>		<input checked="" type="checkbox"/>		<input type="checkbox"/>		<input type="checkbox"/>		PRODUCT 15041110
		DESIGNED <input checked="" type="checkbox"/>		CHECKED <input checked="" type="checkbox"/>		APPROVED <input checked="" type="checkbox"/>		SIZE A4		
IST İsci Sağlığı Teçhizatı Sanayi ve Ticaret Ltd Sti Ostim Melih Gökçek Blv 31 Caddesi 2269 sokak 42 Ankara Türkiye 06374 www.ist.com.tr Ph 0090312 384 13 00 Fax 0090312 341 73 03						DRAWING NUMBER/DATE: AK19012018-01-00		SHEET: 1 OF: 1	DRAWING NAME: EMERGENCY SHOWERS ISTEC Type ESW-OWT 15041110	

# ISTEC®

## SHOWERS & EYEBATHS

### INCUEDED OPTIONAL FITTINGS



- ① Ex-Proof or Non Ex-Proof Water Immersion Heater
- ② GRP Platform Activation for Shower
- ③ Ex-Proof or Non Ex-Proof Ex-Proof Chiller Cooling Unit
- ④ Scald Protection Valve
- ⑤ Treadle Foot Activation for Eye Wash
- ⑥ Panic/Push Bar activation for Shower
- ⑦ Testing Lever
- ⑧ GRP Grating
- ⑨ Flanged Water Inlet
- ⑩ ABS Eye Wash Lid
- ⑪ Temperature Gauge
- ⑫ Visual Water Level Indicator
- ⑬ Junction Box
- ⑭ Overhead white GRP Sun Canopy

*Photos are shown as example.  
Products may differ according to the project.*

# ACCESSORIES



# ISTEC®

## SHOWERS & EYEBATHS

We provide variety of special services you may need.

### Engineering Consultation

IST provides complete information on the design, use, supply and care of emergency showers and eye/face washes. For all your needs during a new plant installation or facility renovation, our experienced team will guide you to the best and most economical solution.

### Quality and Safe Product Selection

Our product range has a wide range of standard and optional designs. For interior and exterior applications, we offer high quality systems with heating or cooling, with freeze protection, portable or fixed special systems.

### Special Engineering Solutions

Each shower is designed for different purposes and cannot substitute each other. In addition, standardized units with heating or cooling, may not always be the right choice for your needs. IST is fully equipped to offer and produce the special designed systems according to your needs.

### Adjusting Water Temperature

Tepid water supply (16 - 38 ° C), which is a requirement of both American and European standards, requires special attention. Our expert team has the capability to analyze resources of your facility and offer solutions to ensure that emergency showers and eye / face wash fountains will work properly under all circumstances.

Our experts will work in coordination with your design or expert team.

### Pre-Sales Solid Modelling and Technical Drawing

We provide customized design and engineering solutions to customers with our advanced three-dimensional solid modelling software. In this way, our customers can more easily analyze the suitability of the product to their facility and can plan the project accordingly.

Two or three dimensional detailed technical drawings are available for all our products.

### After-Sales Support

Our expert technicians can evaluate your existing emergency shower and eye/face wash systems to ensure compliance with ANSI and EN Standards.

Our expert team will assist you about training and product setup for your new emergency shower. All our products are guaranteed against production and workmanship defects for a period of 24 months.

📍 Ostim Mah. İvedik OSB 31.Cad. 2269.Sk. No: 42 • 06374 Yenimahalle, Ankara, TURKEY

☎ +90 312 384 13 00

☎ +90 312 341 73 03



✉ info@ist.com.tr

🌐 www.ist.com.tr

WHAT WE DO