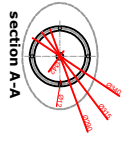
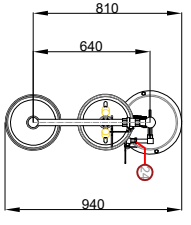


DOCUMENT NO	TC.02.002
REVISION NO	00
REVISION DATE	--
RELEASE DATE	30.06.2021

NO.	DESCRIPTION	MATERIAL
26	Pedal Chain	304 STAINLESS STEEL
28	Pedal Clamp	304 STAINLESS STEEL
29	Pedal Spring	304 STAINLESS STEEL
30	Foot Control Spring	304 STAINLESS STEEL
31	Foot Control Pedal	304 STAINLESS STEEL
32	1" Filter	304 STAINLESS STEEL
33	1/2" Ball Valve for eyeflowe wash	304 STAINLESS STEEL
34	M10x45 Hole in Bolt4 (piece)	304 STAINLESS STEEL
35	1" Valve Handle	304 STAINLESS STEEL
36	Spray Nozzles	Brass
37	Rubber Dust Cover	Plastic
38	Eyewash Bowl (630x30mm)	304 STAINLESS STEEL
39	Push Handle Control for Eyewash	304 STAINLESS STEEL
40	Eyeflowe corner connection	304 STAINLESS STEEL
41	Eyeflowe wash sign	Phosphorus
42	Emergency shower sign	Phosphorus
43	Push Rod Control for shower	304 STAINLESS STEEL
44	Shower Head Fitting	304 STAINLESS STEEL
45	Top Corner Fitting	304 STAINLESS STEEL
46	1" Water Outlet (Female BSPP)	304 STAINLESS STEEL
47	Midline connection	304 STAINLESS STEEL
48	Internal connection fitting	304 STAINLESS STEEL
49	1/2" 85 mm pipe	304 STAINLESS STEEL
50	1" 220 mm pipe	304 STAINLESS STEEL
51	1" 500 mm pipe	304 STAINLESS STEEL
52	1" 740" 120 mm pipe	304 STAINLESS STEEL
53	1/4" 590 mm pipe	304 STAINLESS STEEL
54	1 1/4" 660 mm pipe	304 STAINLESS STEEL
55	1" Ball Valve	304 STAINLESS STEEL
56	Shower head Bowl (ø300xmm)	304 STAINLESS STEEL



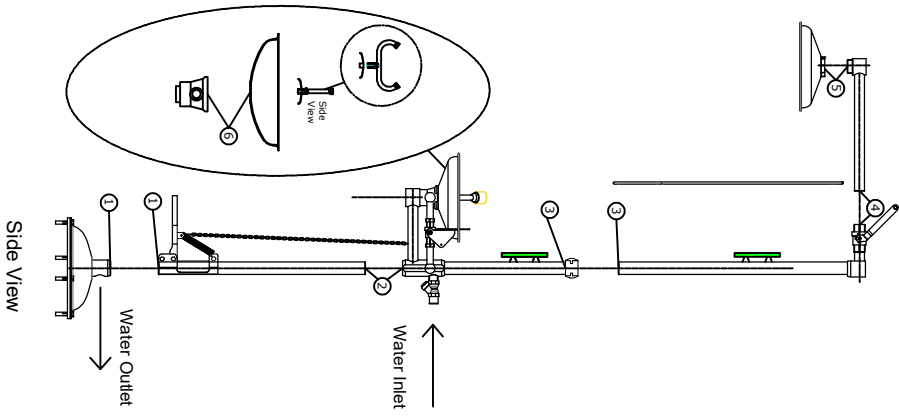
NOT: The Emergency shower is mounted on the floor with 4 M10x45 hole in bolts and dowels.

Bolts and dowels will be sent with the product.

- 4 piece hole in anchor bolts
- 4 piece dowels

Standards: EN 15154-1-2  
ANSI/ISEA Z358.1-2014  
Water Flow: 75.7 lt / min for Shower  
11.4 lt / min for eye/face wash  
Total Weight: 22.6 kgs  
Packed Dimensions: 35x83x21 cm

Static test pressure : 7 bar  
Min using pressure : 1,4 bar  
Max using pressure : 2,8 bar



- 1) Screw number 1 pieces together. (1-1)
- 2) Screw number 2 pieces together. (2-2)
- 3) Screw number 3 pieces together. (3-3)
- 4) Screw number 4 pieces together. (4-4)
- 5) Screw number 5 pieces together. (5-5)
- 6) Eyewash dish screwed to low and (6-6), eyewash screwed on the middle of the eyewash dish and connected completely. Spray nozzles must be to run parallel with person who see in front of shower.
- 7) Please use impermeability teflon bands at pipe connection points
- 8) The shower which is finished assembly is connected pedestal by 4 holes that are on pedestal connecting part. For the connecting could use M10x45 hole in anchor bolt steel plugs.
- 9) The shower can directly connected to water network by 1" water inlet.
- 10) You can drain the waste water by connecting a suitable 1" diameter pipe or hose to the waste water outlet.

PREPARED	APPROVED
Çağkan TOPCU	Serdar TÜRKÜÇAR