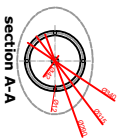
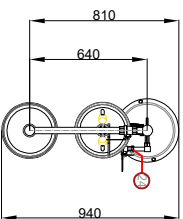
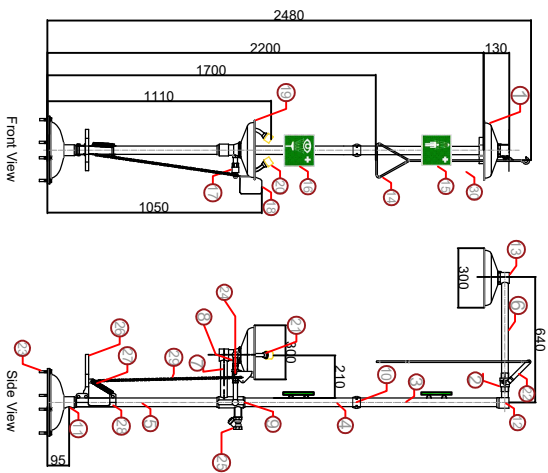


15032000-316 Technical Drawings

DOCUMENT NO	TC.02.002
REVISION NO	00
REVISION DATE	--
RELEASE DATE	30.06.2021

NO	DESCRIPTION	MATERIAL
29	Pedal Chain	316 STAINLESS STEEL
28	Pedal Clamp	316 STAINLESS STEEL
27	Foot Control spring	316 STAINLESS STEEL
26	Foot Control Pedal	316 STAINLESS STEEL
25	1" Filter	316 STAINLESS STEEL
24	1/2" Ball Valve for eye/wash wash	316 STAINLESS STEEL
23	M10x45 Hole in Body (piece)	316 STAINLESS STEEL
22	1" Valve Handle	316 STAINLESS STEEL
21	Spray Nozzles	Brass
20	Rubber Duct Cover	Plastic
19	Eyewash Bowl (20x30mm)	316 STAINLESS STEEL
18	Push Handle Control for Eyewash	316 STAINLESS STEEL
17	Eyeflange corner connection	316 STAINLESS STEEL
16	Eyeflange wash sign	Phosphorus
15	Emergency shower sign	Phosphorus
14	Pull Rod contact for shower	316 STAINLESS STEEL
13	Shower Head Fitting	316 STAINLESS STEEL
12	Top Corner Fitting	316 STAINLESS STEEL
11	1" Water Outlet (female BSPF)	316 STAINLESS STEEL
10	Medium connection fitting	316 STAINLESS STEEL
9	Inner Connection fitting	316 STAINLESS STEEL
8	1/2" 88 mm pipe	316 STAINLESS STEEL
7	1" 220 mm pipe	316 STAINLESS STEEL
6	1" 500 mm pipe	316 STAINLESS STEEL
5	1 1/4" 740 mm pipe	316 STAINLESS STEEL
4	1 1/4" 590 mm pipe	316 STAINLESS STEEL
3	1 1/4" 660 mm pipe	316 STAINLESS STEEL
2	1" Ball Valve	316 STAINLESS STEEL
1	Shower Head Bowl (20x30mm)	316 STAINLESS STEEL




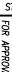
NOT: The Emergency shower is mounted on the floor with 4 M10x45 hole in bolts and dowels.

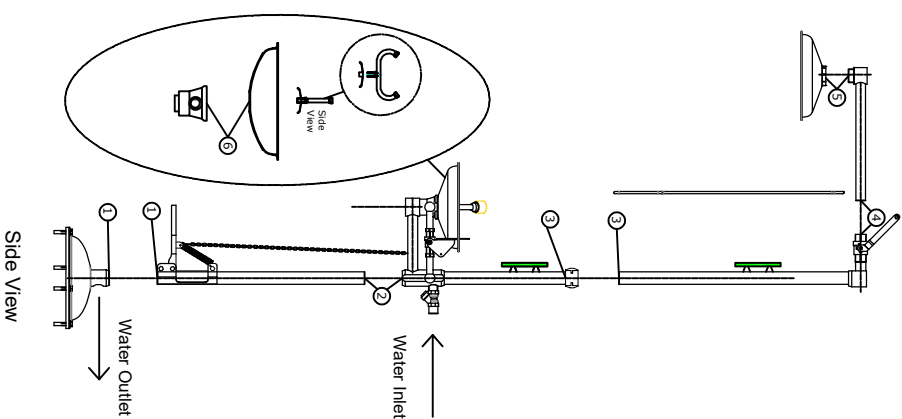
Bolts and dowels will be sent with the product.

- 4 piece hole in anchor bolts
- 4 piece dowels

Standards: EN 15154-1-2
ANSI/ISEA Z358.1-2014
Water Flow: 75.7 lt / min for Shower
1,4 lt / min for eyeface wash
Total Weight: 22,6 kgs
Packed Dimensions: 35x83x21 cm

Static test pressure : 7 bar
Min using pressure : 1,4 bar
Max using pressure : 2,8 bar

															
TYPE MODIFICATION		FOR APPROVAL		FOR REVISION		REVISIONS									
YES <input type="checkbox"/> NO <input type="checkbox"/>		YES <input type="checkbox"/> NO <input type="checkbox"/>		32		<table><thead><tr><th>NO.</th><th>DATE</th><th>DESCRIPTION</th></tr></thead><tbody><tr><td> </td><td> </td><td> </td></tr></tbody></table>				NO.	DATE	DESCRIPTION			
NO.	DATE	DESCRIPTION													
FIRST ISSUE		SS		FA		ST									
						SIZE SCALE									
						A4		1/100							
		PRODUCT													
		LISTED TYPE ESW EMERGENCY SHOWER AND EYE/FACE WASH													
STATUS		DRAWING NUMBER/DATE		SHEET		DRAWING NAME									
		4203/16-1		1 OF 1		15032000-316									
IST Inc. Sagami Technical San'yai Co. Ltd. 1-6-17, Nishikubo 2-chome, Nishi-ku, Osaka 550-8574, Japan Tel: 06-6371-3841 Fax: 06-6371-3411 www.ist.com.it															



- 1) Screw number 1 pieces together. (1-1)
- 2) Screw number 2 pieces together. (2-2)
- 3) Screw number 3 pieces together. (3-3)
- 4) Screw number 4 pieces together. (4-4)
- 5) Screw number 5 pieces together. (5-5)
- 6) Eyewash dish screwed to low and (6-6), eyewash screwed on the middle of the eyewash dish and connected completely. Spray nozzles must be to run parallel with person who see in front of shower.
- 7) Please use impermeability teflon bands at pipe connection points
- 8) The shower which is finished assembly is connected pedestal by 4 holes that are on pedestal connecting part. For the connecting could use M10x45 hole in anchor bolt steel plugs.
- 9) The shower can directly connected to water network by 1" water inlet.
- 10) You can drain the waste water by connecting a suitable 1" diameter pipe or hose to the waste water outlet.

PREPARED

APPROVED

Çağkan TOPCU

Serdar TÜRKÜÇAR