

ISTEC® TYPE ESW-P

350 L TANK CAPACITY, PORTABLE, PRESSURIZED
EMERGENCY SHOWER AND EYE / FACE WASHING UNIT

P/N:15032000-P

CE *The pressure tanks of the units are manufactured and certified according to **EN 13445: 2014** in accordance with the **2014/68 / EU** directive. The unit **CE** marking and has proven safety.*

Designed to use in areas where fixed emergency shower and eyewash fountains can not be installed and where there are various hazards at working areas or during temporary work.

Works with compressed air. It has two different entrances to fill water and air. 2" water filling plug is available. There is a regulator for the flow regular at the outlet of the tank.

In the event of danger, the valve handle of the emergency shower or the valve handle of the eye / face wash unit is activated to ensure that clean water is sprayed.

According to customer request, the wheeled easy transport system can be included in the unit. Due to its compact structure, it does not occupy much space when not in use.

*After use, water and air filing operations are repeated and continuous usage is ensured.

The water temperature should be kept constant between 16-38 oC according to the requirements of the standard. Therefore, an EX-PROOF or NON-EXPROOF immersion heater can be added to the unit according to the customer's request.

The tank volume consists of 270 L water and 80 L air pressure and has a total capacity of 350 liters.

The water/air volume ratio depending on the desired amount of water (liters) and the amount of air pressure to be used (bar) is available in the table below.

$$P1.V1=P2.V2$$

P2=2.1 bar (Water pressure according to ANSI Standards)

PRESSURE (P)	WATER VOLUME (V)	AIR VOLUME (V)
7 Bar	270 L	80 L

The features of the emergency shower and eye / face washing fountain in the unit are as follows.

General Features

As per customer request;

***For emergency shower**

-Pull rod or push handle & foot treadle

***For eye/face wash**

-Hand control or/and foot treadle

Water inlet pipes: 1"

Body pipes : 1 ¼"

Shower head and eyewash bowl diameter: 300 mm

Shower materials can be produced as 304 K. Stainless Steel, 316 K. Stainless Steel or Galvanized steel according to customer request.

Pressure Information:

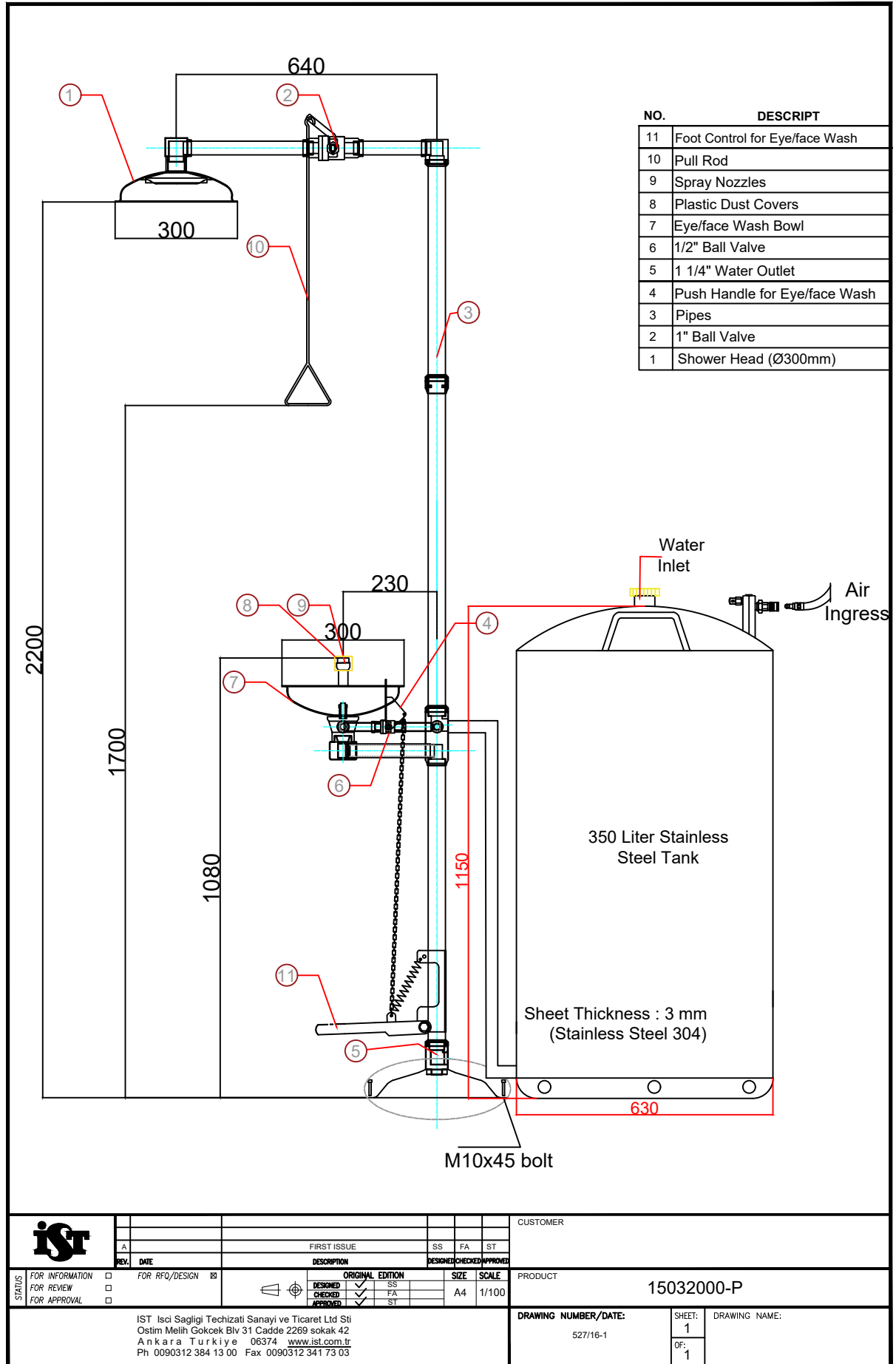
Max. Working pressure: 7 bar

Test pressure: 12 bar

Design pressure: 7 bar

- Spare Parts for Emergency Shower and Eye / Face Wash Unit-

SPARE PARTS	Stainless Steel P/N	Galvanized and Painted Steel P/N
Foot Treadle Set	60009604	60009603
Spring for Foot Treadle	60009119	60009119
1" Ball Valve	60009043	60009064
1/2" Ball Valve	60009047	60009070
1" Valve Handle	60009185	60009224
1/2" Valve Push Handle Set	60009591	60009592
Eyewash Bowl/Shower Head	60009160	60009221
ABS Eyewash Bowl/Shower Head	60009301	60009301
Twin Sprayy Nozzles Set	60009680	60009680
Spray Nozzles	60009111	60009111
Dust Covers Set	60009110	60009110
Floor Flange	60009150	60009211
Pull Rod	60009828	60009219



IST A REV. DATE FOR INFORMATION <input type="checkbox"/> FOR REVIEW <input type="checkbox"/> FOR APPROVAL <input type="checkbox"/>	FIRST ISSUE SS FA ST		CUSTOMER	
	DESCRIPTION DESIGNED CHECKED APPROVED		PRODUCT	
	ORIGINAL EDITION DESIGNED CHECKED APPROVED		15032000-P	
	SIZE SCALE A4 1/100		DRAWING NUMBER/DATE: 527/16-1	
IST İsci Sağlığı Teçhizatı Sanayi ve Ticaret Ltd Sti Ostim Melih Gökçek Blv 31 Cadde 2269 sokak 42 Ankara Türkiye 06374 www.ist.com.tr Ph 0090312 384 13 00 Fax 0090312 341 73 03			SHEET: 1 OF: 1 DRAWING NAME:	