

IST ISCI SAGLIGI TECHIZATI CO., LTD.



About Us

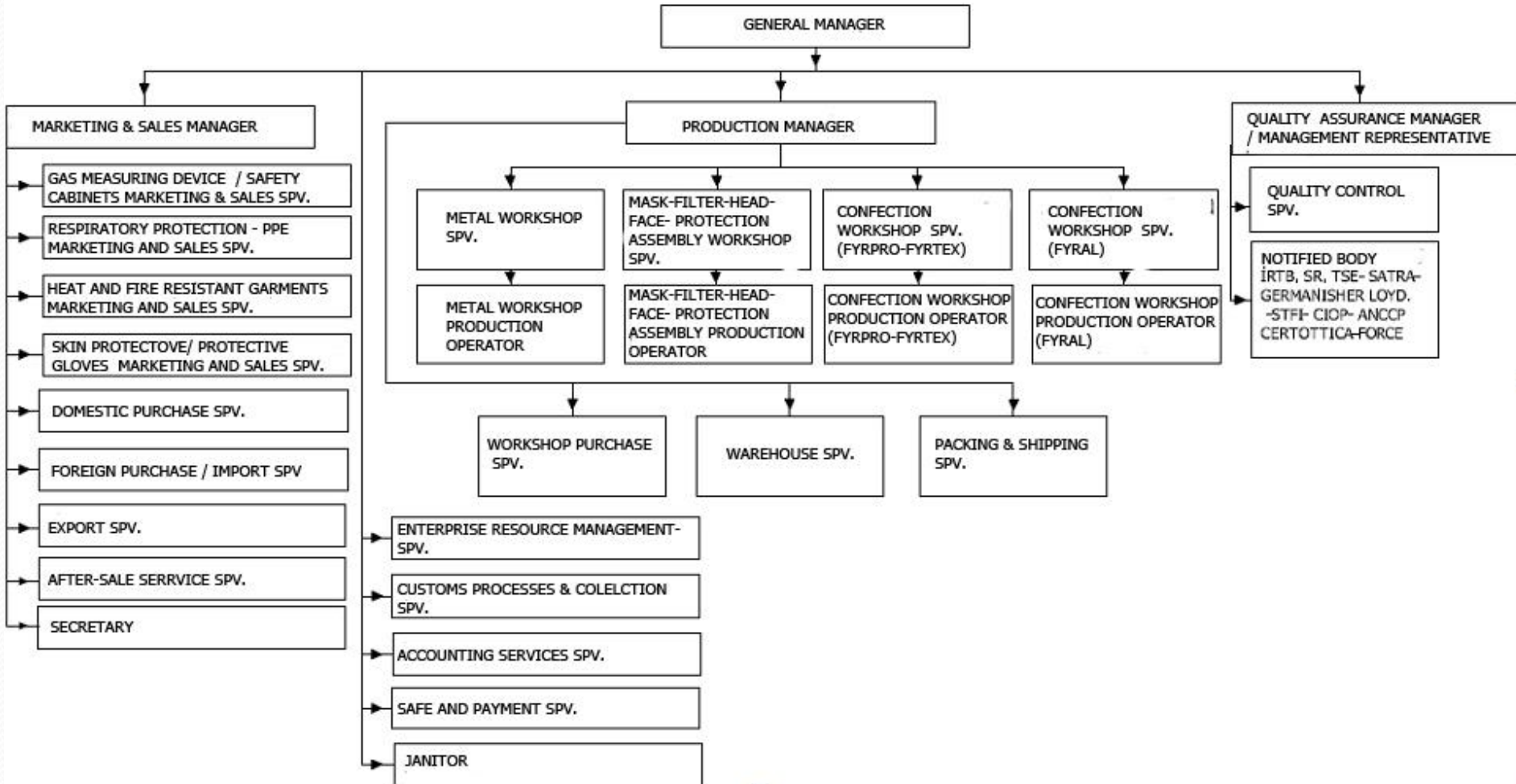
- **IST ISCI SAGLIGI TECHIZATI CO., LTD.** produces a complete range of equipment and systems for
 - **Occupational Safety**
 - **Worker's Health**
 - **First aid & Civil Defence**
 - **Fire & CBRN & Personal Protection**since 1979.
- Headquarters and factories are located in Ankara and two sales offices are located in Istanbul. Our operations extend around the country through our distributors.
- Our products are certified according to 89/686/EEC personal protection equipment directive and related harmonized European standards. Our company has **EN-ISO 9001:2008** quality system certificate.

IST Safety Production is divided two divisions;

- Textile Production
- Metal Production

- IST production also include,
- Metal division;
 - **Emergency Showers and Eye-wash Fountains**
 - **Airline Respiratory Systems, Fresh Air Breathing Systems**
 - **Safety Cans**
- Textile division;
 - **Fireman Garments**
 - **Aluminized Fire Approaching Suits**
 - **Heat and Flame Protective Clothings for Industrial Purposes**
 - **Protective Garments Against Electrical Arc**
 - **Air Cooled Garments**
 - **Fire Blankets**
- PPE;
 - **Gas Masks and Filters**
 -
- To maintain our position at the forefront of protective equipment technology, we operate with the most complete and well funded R&D facilities in the safety equipment industry.
- IST R&D Team continuously improves products according to EN Standards and performs product testing at our own laboratories.

ORGANIZATION CHART





PPE ARTICLE 11B CERTIFICATION

Certificate No. 0107087a

This is to certify that

IST İŞÇİ SAĞLIĞI TEÇHİZATI
SANAYİ VE TİCARET LTD ŞTİ
Ostim Mah. M. Gökçek Bulv. 31. Cd.2269 Sok.
No: 42/1-2 Ivedik O.S.B Yenimahalle ANKARA

has been found to conform to the requirements of Council Directive 89/686/EEC Article 11B-System for ensuring EC quality of production by means of monitoring, for the manufacture of fire fighters protective clothing as described in the listed EC Type Examination certificates

SATRA 2283: FYRPRO 400
SATRA 2754: FYRAL 2000
SATRA 2852: FYRAL 1000
SATRA 3120: FYRPRO 500
SATRA 3187: FYRAL 1000P, FYRAL 1000PMB, FYRAL 2000P,
FYRAL2000 PMB
STFI Z 3697/08-4782/08: FYRPRO 410
STFI Z 3698/08-4783/08: FYRPRO 420
STFI Z 3808/08-4979/08: FYRPRO 430, FYRPRO 430G

Date

3rd June 2013

This certificate is valid until

2nd June 2014

for and on behalf of
SATRA Technology Centre Ltd.



The issuance of this certificate is subject to the company maintaining its manufacturing and quality system to the required standard which will be monitored by:

SATRA Technology Centre Ltd.
Wyndham Way, Telford Way,
Kettering, Northamptonshire NN16 8SD, UK
Tel: +44(0)1536 410000 Web: www.satra.co.uk
Registered in England: No. 3856296

Note - This certificate is only valid if embossed with the following text "SATRA-European Notified Body number 0321"



PPE ARTICLE 11B CERTIFICATION

Certificate No. 0107087b

This is to certify that

IST İŞÇİ SAĞLIĞI TEÇHİZATI
SANAYİ VE TİCARET LTD ŞTİ
Ostim Mah. M. Gökçek Bulv. 31. Cd.2269 Sok.
No: 42/1-2 Ivedik O.S.B Yenimahalle ANKARA

has been found to conform to the requirements of Council Directive 89/686/EEC Article 11B-System for ensuring EC quality of production by means of monitoring, for the manufacture of fire fighters protective clothing as described in the listed EC Type Examination certificates

STFI Z 3604/08-4724/08: FYRPRO 510
STFI Z 4502/10-5694/10: FYRPRO 450
STFI Z 4247/09-5611/10: FYRPRO 440
STFI Z 5366/12-6770/12 FYRPRO 442
ANCCP DPI720AT 1282: FYRAL 700P
ANCCP DPI720AT 1283: FYRAL 710P, FYRAL 720P, FYRAL 730P,
FYRAL 740P

Date

3rd June 2013

This certificate is valid until

2nd June 2014

for and on behalf of
SATRA Technology Centre Ltd.



The issuance of this certificate is subject to the company maintaining its manufacturing and quality system to the required standard which will be monitored by:

SATRA Technology Centre Ltd.
Wyndham Way, Telford Way,
Kettering, Northamptonshire NN16 8SD, UK
Tel: +44(0)1536 410000 Web: www.satra.co.uk
Registered in England: No. 3856296

Note - This certificate is only valid if embossed with the following text "SATRA-European Notified Body number 0321"



KALİTE YÖNETİM SİSTEMİ BELGESİ

QUALITY MANAGEMENT SYSTEM CERTIFICATE



TÜRK STANDARDLARI ENSTİTÜSÜ

bu belge ile

İST-İŞÇİ SAĞLIĞI TEÇHİZATI SAN. VE TİC. LTD. ŞTİ.
MELİH GÖRÇEK BULVARI 31. CADDE 2269 SOK. NO:42/1-2
İVEDİK OSB PK:06374 YENİMAHALLE -
ANKARA / TÜRKİYE

kuruluşunun TS EN ISO 9001:2008 şartlarına uygun bir KALİTE
YÖNETİM SİSTEMİNE sahip olduğunu onaylar.

Belge kapsamı Ek'te verilmiştir

Sistem Belgelendirme ve Komiteler Müdürü
System Certification and Committees Director

Mustafa ÖLÇER



TÜRK STANDARDLARI ENSTİTÜSÜ
TURKISH STANDARDS INSTITUTION

Sistem Belgelendirme Merkezi Başkanı V.
Vice System Certification Center

Mesut DURU

Türk Standardları Enstitüsü Türk Akreditasyon Kurumu TÜRKAK tarafından akredite edilmiştir.
Turkish Standards Institution, has been accredited by the Turkish Accreditation Agency TÜRKAK.

TURKISH STANDARDS INSTITUTION
hereby certifies that the organization

İST-İŞÇİ SAĞLIĞI TEÇHİZATI SAN. VE TİC. LTD. ŞTİ.
MELİH GÖRÇEK BULVARI 31. CADDE 2269 SOK. NO:42/1-2
İVEDİK OSB PK:06374 YENİMAHALLE -
ANKARA/TÜRKİYE

has a QUALITY MANAGEMENT SYSTEM which fulfills
the requirements of the TS EN ISO 9001:2008

Scope of the certificate is given in annex

Belge No /Certificate No
KY-2161-02/10-R

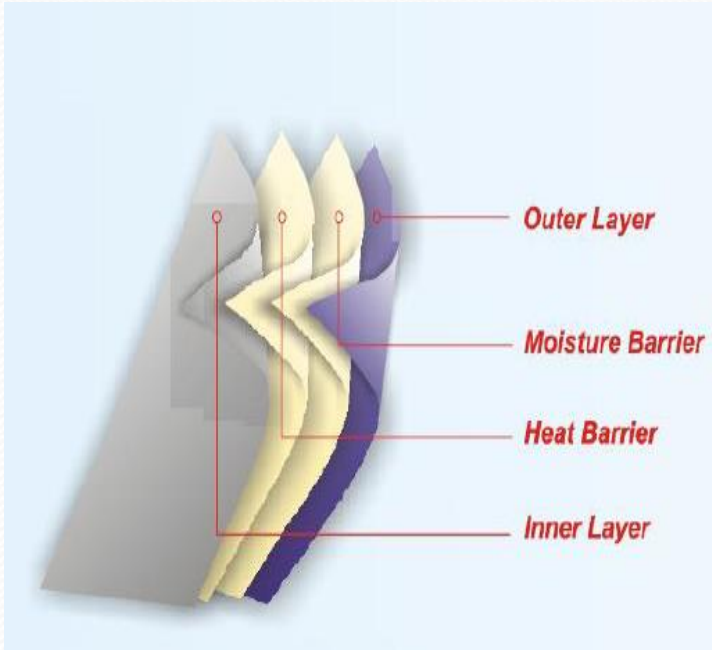
Belge Tarihi / Date of Certificate
31.01.2013

Geçerlilik Tarihi / Valid Until
31.01.2016

Revizyon Tarihi / Date of Revision
31.01.2013

Bu belge belgelendirme şartlarına uygunluk sağlandığı
sürece geçerlidir. This certificate is valid provided that
compliance with the certification requirement is maintained.

PROTECTIVE CLOTHES FOR FIRE FIGHTERS



FYRPRO® 440 FIREMAN GARMENT

- Have **CE** mark and certified in accordance with 89/686/EEC PPE Directive.
- Certified according to EN 469 :2005 standard with **X2,Y2,Z2** supreme level.
- Certified in accordance with Marine Equipment Directive **MED**.

! Have CLASS 2 :This is the highest level which can be reached in order to enable protection .



LAYER SYSTEM

- **Outer Layer** : NOMEX® Outershell Tough (% 75 NOMEX®, % 23 KEVLAR®, % 2 P140) Water-Oil Repellent
- **Moisture Barrier** : FR Fabric + PU
- **Heat Barrier** : 100% Aramide Felt
- **Inner Layer** : Aramide /Viscose FR

Design and size of the garments can be prepared according to the request of the customers.

- NOMEX® and KEVLAR® registered trademarks of DuPont



EN 367:1992

Heat transfer-flame, Xf

The test defines after how many seconds the temperature of the inner lining rises with
12°. HTI 12° correlates with the threshold of pain of a human being (first degree burns).
24°. HTI 24° correlates with second degree burns of the human skin.

!FYRPRO 440 conform to Level 2, Xf2

Heat transfer Index	Level 1, Xf1	Level 2, Xf2
HTI ₂₄	≥9.0	≥13
HT ₂₄ -HTI ₁₂	≥3.0	≥4.0

EN ISO 6942

Heat transfer-radiant, Xr

The times for a temperature rise of 12°C and 24°C in the calorimeter are recorded and expressed as Radiant Heat Transfer Index (RHTI).

The RHTI gives a number, measured in seconds, to achieve this temperature rise of 12°C / 24°C in the calorimeter, when testing with a specific radiant heat flux.

!FYRPRO 440 conform to Level 2, Xr2

Heat transfer factor index	Level 1, Xr1	Level 2, Xr2
$RHTI_{24}$	≥ 10.0	≥ 18
$RHT_{24} - RHTI_{12}$	≥ 3.0	≥ 4.0

EN 20811

Resistance to water penetration, Y

The layer (including seams) providing the resistance of water entry, when tested in accordance with EN 20811:1992 using a rate of increase in pressure of (0.98-/+ 0.05) kPa/min

!FYRPRO 440 conform to Level 2, Y2

Waterproofness	Level 1, Y1	Level 2, Y2
[kPa]	<20	≥20

EN 31092

Water vapour resistance, Z

Determination of physiological properties, measurement of thermal and water-vapour resistance

The requirements for water vapour resistance shall be achieved by testing either the complete component assembly or the multilayer clothing assembly.

!FYRPRO 440 conform to Level 2, Z2

Water vapour resistance	Complete material assembly	
	Level 1, Z1	Level 2, Z2
EN 31092 [$\text{m}^2\text{Pa}/\text{W}$]	>30	≤ 30

FYRAL[®] Aluminized Fire Approaching Suits

- FYRAL[®] series are used for approaching fire for short periods of time .
- Certified according to EN 1486:2007 and 89/686/EEC directives.
- Have **CE** certificate.





**double visor system :
gold coated outer visor
and inner visor**



**breast protective
hood**



**back bellow that allows
to place inner self
contained breathing
apparatus**



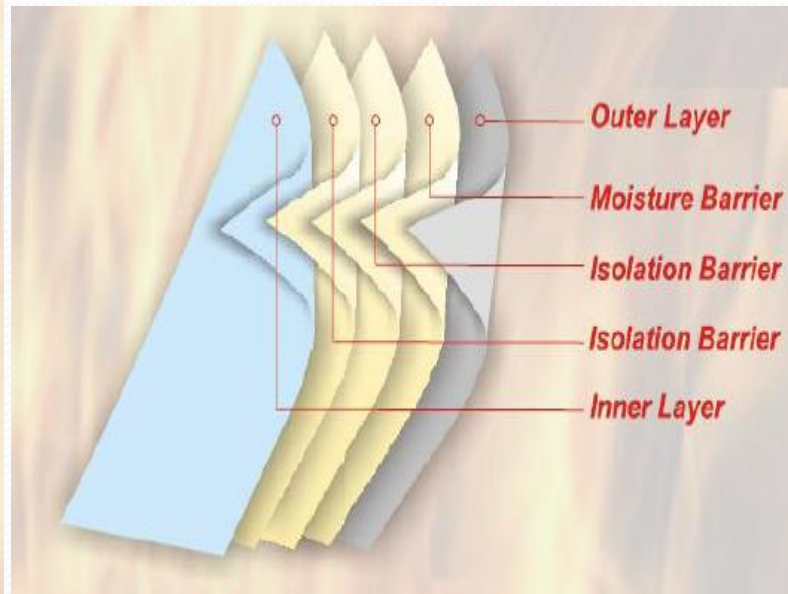
**zipper
protective flap**



**protective boots covers
and elastic cuff system**



**protective gloves and
adjustable cuff**



PROTECTIVE CLOTHING TO PROTECT AGAINST HEAT AND FLAME

- FYRTEX ® series are certified according to EN 11612:2008 standard and 89/686 EEC Directives.



PROTECTIVE CLOTHING TO PROTECT AGAINST HEAT AND FLAME

FYRTEX ® HEAT AND FLAME RESISTANT GARMENTS

Jacket and Trousers – Coat and Trousers – Coveralls

- Certified according to 89 / 686 EEC Personal Protective Equipment,
- Certified according to EN ISO 11612, EN 1149-5 (EN 1149-3 and EN 1149-1) standards
- Have **CE** certificate.
- All parts of the garments are made of fire resistant material
- Reflective is certified as per EN 469 and EN 471.
- Garment does not have any materials harmful for human or environment.
- Design and size of the Garments can be prepared according to the request of customers.



PROTECTIVE GARMENTS AGAINST ELECTRICAL ARC ELECTPRO ®

- Designed to protect the body, arms and legs of the personnel against the thermal effects of electric arc.
- Certified according to 89 / 686 EEC Personal Protective Equipment,
- Certified according to EN 61482-1-2 and EN ISO 11612 standards.
- Have **CE** certificate.

! Have Class 2 level:(7 kA): This is the highest level which can be reached in order to enable protection against electric arc according to EN 61482 standard

- All parts of the garments have been made from flame proof materials.
- Design and size of the garments can be prepared according to the request of the customers.

Arc Energy W_{arc} :318 kJ

Direct exposure incident energy E_{io} :10,1 cal/cm²

Arc current : 7 kA



● PROTECTIVE GARMENTS AGAINST WELDING & MOLTEN METAL SPLASH

- Certified according to 89 / 686 EEC Personal Protective Equipment,
- have the **CE** certificate

● EN ISO 11612:2008 A1 B2 C1 D3 E3

! Have highest protection against to molten aluminium and iron splash

- A: EN ISO 15025 -limited flame spread
 - B: ISO 9151 -Convective heat
 - C: EN ISO 6942- Radiant heat
 - D: ISO 9185 -Molten Aluminium splash
 - E: ISO 9185- Molten Iron splash
- EN 11611 standard specifies the test methods for general performances requirements of protective clothing for use in welding and allied processes.



FYRAL® 800V SERIES

- FYRAL ® 800V series clothings have been made from aluminised viscose fabric.
- Designed for protection against molten metal splash and radiant heat
- The garments are certified according to 89 / 686 EEC Personal Protective Equipment
- Have **CE** certificate
- Certified to EN ISO 11612:2008



Fyral 800V series hood, sleeve, apron, gaiters

- Made from aluminised viscose fabric.
- Designed for protection against molten metal splash and radiant heat.
- Certified according to 89 / 686 EEC Personal Protective Equipment
- Have **CE** certificate.
- EN ISO 11612:2008



• **HEATPRO ® VORTEX AIR COOLED FURNACE SUITS**

HEATPRO ® garments have been produced to work, repairs and maintenance in furnace where radiant heat exists.

Comfort is provided by cool air through channels within fabric layers.

! Advantages

- Works by air not electricity.
- Small, light and can be carried easily.
- Low cost
- Made of stainless steel and metal parts. Does NOT contain cheap plastic pieces.
- Temperature level can be adjustable
- Not contained moving parts.

Outer layer : Aluminized covered or heat and flame resistance fabrics

Design : Coat or Coverall

• **Applications**

- **Foundry, boiler house**
- **Steel production, Glass production industries**
- **Cement, Forging industries**
- **Welding clothes**
- **Dyeing furnaces, Mining Industries**
- **Clearing for harmful material**



- **IST® FLAMEPROOF T-SHIRT & INNERWEAR**

- They had been produced to ensure protecting from harmful effects of flame and heat, designed as soft and comfortable.

-Knitted fabric: %100 Aramid or
50:50 % Viscose /Aramid

-100 % Aramid thread is used for hood stitching.



IST® FIRE HOOD

IST® Fire Hood is produced to protect user's head, neck and shoulders from harmful effects.

IST® Fire Hood can be put on/off owing to its flexible make which had been produced from double layer.

This knitted fabric structure also ensures user's comfort.

IST® Fire Hood is certified in accordance with EN 13911:2004 Standard. It has CE Certificate according to 89/686 EEC Directive.



Features :

- Internal and External Fabric: 100 % KERMEL® or 50:50 % KERMEL® / LENZING FR™
- Durable against high temperatures and flames
- It protects head, neck and shoulders
- 100% Aramid thread is used for hood stitching
- It can easily be used with helmet and mask
- Standard size fits to all users

Metal Production:

- Emergency Safety Showers and Eyewash Fountains
- Airline Breathing Systems
- Safety Cans

Emergency Safety Showers and Eyewash Fountains

EN 15154-1 and EN 15154-2

- Emergency Safety Showers
- Emergency Eye-wash Units
- Emergency Combination Units
- Decontamination Units
- Beach Showers
- Showers with platform and water tank



EYEWASH FOUNTAINS:

Eye wash units are designed and intended to be installed in close range of persons working in a potentially hazardous area. The main purpose of these devices is to immediately deliver flushing fluid in sufficient volume to flush the eyes following exposure to injurious substances or heat. With this accomplished the injured person can proceed to medical care.



EYEWASH FOUNTAIN MODELS:

Wall mounted



Wall mounted with flange



Wall mounted with bracket



Countertop mounted



Countertop mounted (Laboratory)



Pedestal mounted



Pedestal with support



Freeze-Proof



Freeze-Proof with automatic valve



Freeze-Proof with underground valve



Freeze-Proof with underground valve for extreme hot and cold climate

Underground Push-Valves supply warm water from the ground connection which is placed underground and prevents water getting frozen by discharging all water inside the pipes after each use.



Pedal Released



Discharge Position

Pedal Pressed

Operating Position

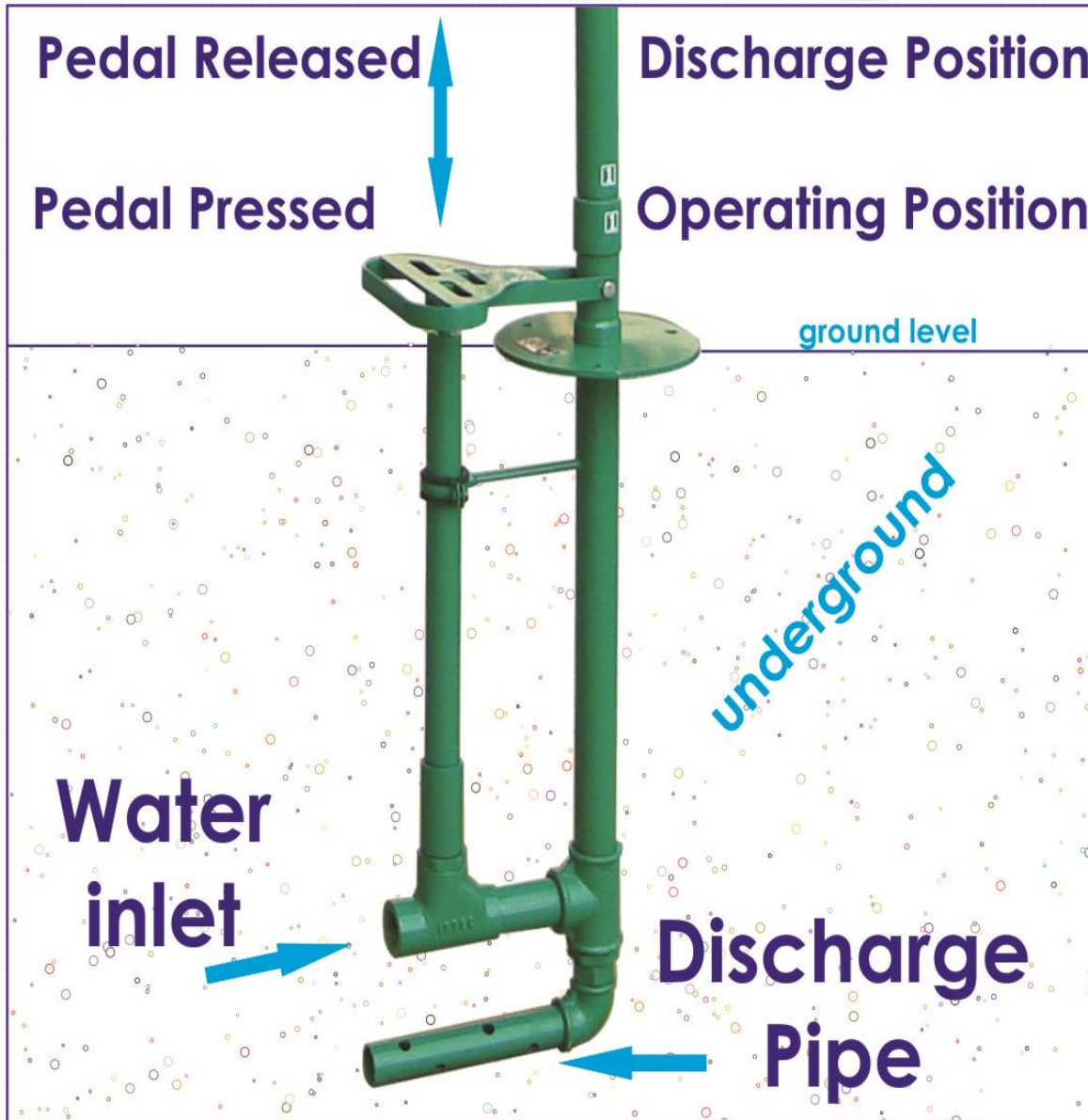
ground level

underground

**Water
inlet**



**Discharge
Pipe**



EMERGENCY SHOWER MODELS:

Pedestal mounted



Pedestal mounted with support



Pedestal mounted with mini panel



Body showers are designed and intended to be installed in close range of persons working in a potentially hazardous area. The main purpose of these devices is to immediately deliver a flushing fluid in a sufficient volume to extinguish flames and/or to flush the body following exposure to injurious substances or heat. With this accomplished the injured person can proceed to medical care.

Wall mounted

with exposed piping



with ball valve



Freeze-Proof

with automatic valve water inlet from ground

with underground valve

with behind wall valve

with double valve



COMBINATION UNIT MODELS

Pedestal mounted



Pedestal mounted with support



Pedestal mounted with mini panel



Combined Eye wash and Body showers are designed and intended to be installed in close range of persons working in a potentially hazardous area. The main purpose of these devices is to immediately deliver a flushing fluid in a sufficient volume to extinguish flames and/or to flush the body following exposure to injurious substances or heat. With this accomplished the injured person can proceed to medical care.

Wall mounted



Freeze-Proof

with automatic valve water inlet from ground

with automatic valve water inlet from up

with underground valve

with double valve

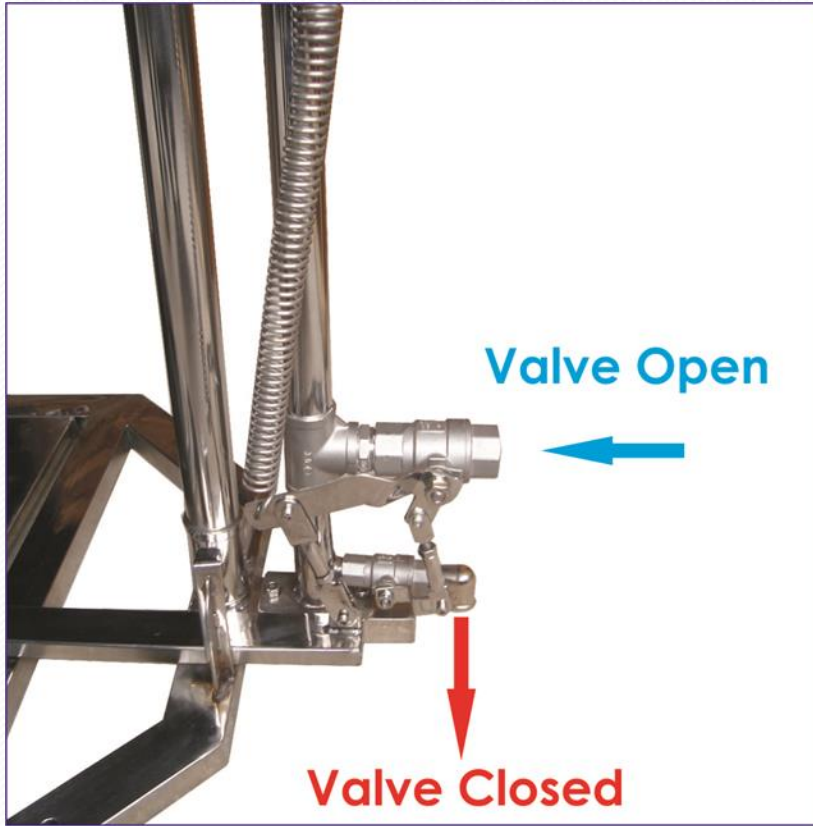


Freeze-Proof with double valve

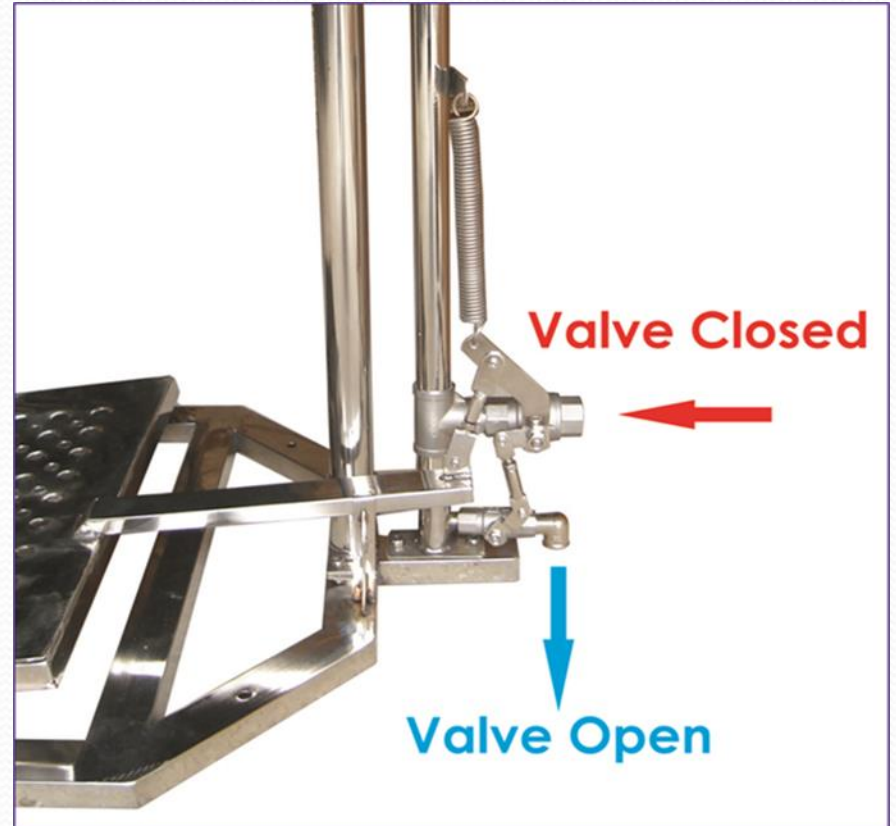
- P/n: 15038080 (Stainless Steel) and 15038585 (Galvanized)

One valve supplies water from the water inlet and the other one discharges the water, left inside the pipes, after each use whenever the water inlet valve closes and prevents water getting frozen by discharging all the water inside the pipes after each use.





Operating Position



Discharge Position

DECONTAMINATION UNITS:

- Decontamination Showers provides sanitation and decontamination to the people exposed to chemical or biological agents, as well as to extinguish burning clothes.
- Autostart once stepped on the platform.
- 14 spray nozzles sprays necessary water to whole body.
- Swivelling spray provides easy decontamination.
- Decontamination Units can be covered from three sides to avoid splashes. (Optional)



Portable Eyewash Fountains:

- Portable eyewash fountain with trigger valve
- Portable eyewash fountain with fixed spray nozzle



Materials:

- All models are made in Stainless steel or galvanized and antistatic powder painted steel.

TÜRK STANDARDLARI ENSTİTÜSÜ TÜRK STANDARDLARINA UYGUNLUK BELGESİ TURKISH STANDARDS INSTITUTION CERTIFICATE OF CONFORMITY TO TURKISH STANDARDS	
Markanın Tanımı TSE Logo	Description of the Mark TSE Logo
BELGE NUMARASI REFERENCE NUMBER OF LICENCE	14.10.02/TSE-7049
BELGENİN İLK VERİŞİ TARİHİ DATE OF FIRST ISSUE OF LICENCE	11/07/2007
BELGENİN SON GEÇERLİLİK TARİHİ LICENCE VALID UNTIL	11/07/2010
BELGE SAHİBİ KURULUŞUN ADI NAME OF THE LICENCE HOLDER	İST İŞÇİ SAĞLIĞI TECHİZATI SAN VE TİC.LTD.ŞTİ.
BELGE SAHİBİ KURULUŞUN ADRESİ ADDRESS OF THE LICENCE HOLDER	DEMİR SANAYİ KUMCUOĞLU SİT. REİS BOK.NO:199 İSKİTLER - ANKARA / TÜRKİYE
ÜRETİM YERİ ADI NAME OF THE MANUFACTURER	İST İŞÇİ SAĞLIĞI TECHİZATI SAN VE TİC.LTD.ŞTİ.
ÜRETİM YERİ ADRESİ ADDRESS OF THE MANUFACTURING PLAZE	DEMİR SANAYİ KUMCUOĞLU SİT. REİS BOK.NO:199 İSKİTLER ANKARA TÜRKİYE
İPTAL EDİLEN BELGE NUMARASI (varsa) INDICATION OF SUPPRESSED LICENCE (if any)	
TEŞCİLLE TİCARİ MARKASI (REGISTERED TRADE MARK)	"İST İŞÇİ SAĞLIĞI TECHİZATI SANAYİ VE TİCARET LTD.ŞTİ." MARKALI
İLGİLİ TÜRK STANDARDI RELATED TURKISH STANDARD	TS EN 15104-2/27.3.2007
BELGE KAPSAMI : MN: 1.4 BAR İLE MAX. 2.0 BAR ARASINDA ÇALIŞAN MANUEL KUMANDALI (EL/FEDAL TAHRİKLI) SU TESİSATINA BAĞLANABİLEN ACILI GÖZ YIKAMA UNİTESİ	
	 ERSİN İNAN ÇAKIR MAKİNA SEKTÖRÜ BELGELENDİRME MÜDÜRÜ
<small>*Enstitümüzün verdiğimiz olan "İmalata Yeterlilik Belgesi" 15.04.2007 tarihinden itibaren uygulanmaktadır. *Bu belge belgelendirilen ürünün, üretim yerinin (imtiha üssünün belirlendiği) partinin karşıladığını da gösterir. TÜRK STANDARDLARI ENSTİTÜSÜ (MERKEZ: ANKARA) * TSE ÜRÜN BELGELENDİRME MERKEZİ: Hacıbey Caddesi No:112 Beşiktaş Çarşısı * Tel: 312 4100200-0312-416 00 00 * Faks:312 4100712/0312-416 00 17 * web: www.tse.org.tr * e-mail: ulk@tse.org.tr</small>	

SAFETY CANS

- *SAFEcan Safety Cans are used for safely transportation, distribution and storage of flammable liquids.*
- *SAFEcan Safety Cans minimize the fire risk by safely reserving the dangerous liquids and keeping the vapor under control. Provides convenience while filling and discharging. Risk stays low when the flammable liquids are stored safely in every sector and even at home. One should remember that risk of accident and fire can be removed when proper safety equipments are used.*
- *Flammable liquids are frequently used in industry and daily life. Fuels, solvents, cleaners etc. Use and storage of these liquids brings some risk. Flammable liquids are found in evaporative form in the nature. They react to vapor under normal atmospheric conditions. Speed of Vapor rises in hotter environment or proximity to the heat source. Where Flammable liquids vapor and mix into the air, a condition is set for the vapor to ignite. The heat of the flame is the result of the increase of the flammable vapor. Ignite of the vapor provokes the flame. Flammable liquid vapor, air and heat source are three main pieces that forms the flame.*

Safety cans are separated as Type 1 and Type 2. In Type 1 Cans filling and discharging are done with the same cover. In Type 2 Cans filling cover and discharging covers are separated. There is a flexible metal hose on the cover of discharging in Type 2 cans. This helps a smooth discharge.



Type 1

Filling and discharging of Type 1 safety container is done with a single lid.

Thickness of steel is 0,70 mm for all types of safety cans.



Type 2

Filling and discharging lids for type 2 containers are separate.

0,5 gallon - 2 liter
1 gallon - 4 liter
2 gallon - 7,5 liter
2,5 gallon - 9,5 liter
3 gallon - 11,5 liter
4 gallon - 15 liter
5 gallon - 19 liter

**Type2
steel**



Safety Cans:

Stainless Steel or Galvanized Painted

Cans are produced as galvanized steel and stainless steel. Galvanized and Painted Safety Cans are more suitable for petrol and derivatives. Stainless Steel Cans are suitable for alcohol, ether, aromatics, hydrocarbon and chlorine based hydrocarbons.

- 2 lt
- 4 lt
- 7,5 lt
- 9,5 lt
- 11,5 lt
- 15 lt
- 19 lt



Transportation of each liquid requires a different color. Red is used for storage and transportation for flammable liquids, blue for kerosene, yellow for diesel fuels and green petrol and derivatives. There has to be a yellow label which includes the warning and directives on each can.



Airline Breathing Systems :

- Compressed Airline Breathing Systems
- Portable Airline Breathing Systems



Compressed Airline Breathing Systems



Portable Airline Breathing Systems





Thank you