

FYRPRO[®] 750

P/N : 13614545

FIREFIGHTING SUIT



XS-4XL



EN 1149-5



EN 469

CAT III

LEVEL 2



Outer layer: 75% Meta-aramid, 23% para-aramid, 2% antistatic fiber (200 g/m²)

Reflective tapes: 50 mm yellow/silver/yellow aramid backed fire retardant retroreflective trims

Moisture barrier: FR Knitted fabric + PU Membrane (150 g/m²)

Heat barrier: 100% Aramid non-woven (150 g/m²)

Inner layer : 50% Aramid, 50% Viscose FR (115 g/m²)

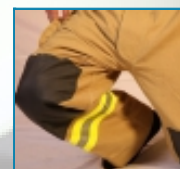
OPTIONAL ACCESSORIES



Silver Reflective Back Writing



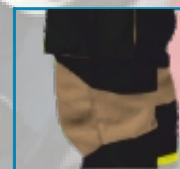
Detachable Back Writing



Aramid silicone Knee Reinforcements



Aramid silicone Elbow Reinforcements



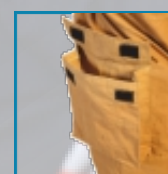
Pre-bent Ergonomic Knees



Pre-bent Ergonomic Elbows

Other Optional Accessories

- Aramid silicone reinforcements on leg ends
- Aramid felt reinforcements on knees
- Rubber pads on knees
- Double layer reinforcements on shoulders
- Side cargo pockets with flap on trousers
- Anti-wicking barriers on legs, bottom of jacket and cuffs
- Embroidery logos
- High waisted trousers
- Zipper at boots top and side vents
- Aramid DRD (Drag rescue device)
- Detachable inner layer
- Inspection zipper
- Hook for attaching gloves
- Radio pocket



Additional Pockets

TESTS	TEST METHOD	MARK
Heat Transfer (Flame)	EN ISO 9151	X ₁ , X ₂
Heat Transfer (Radiant)	EN ISO 6942	X ₁ , X ₂
Water Penetration Resistance	EN ISO 811	Y ₁ , Y ₂
Water Vapour Resistance	EN ISO 11092	Z ₁ , Z ₂

- Protects the personnel against the negative effects of heat, flame and water vapour during the firefighting applications.
- In compliance with (EU) 2016/425 Personal Protective Equipment (PPE) Regulation and CE marked.
- In compliance with 2014/90/EU Marine Equipment Directive (MED).
- Certified according to the standard EN 469 Protective clothing for firefighters - performance requirements for protective clothing for firefighting.
- Has a design which facilitates mobility.
- Consists of two pieces as jacket and trousers.
- 4 layered.



FYRPRO® 750

P/N : 13614545

FIREFIGHTING SUIT



Scan the QR code with your phone's camera to review the product on our website and get an offer.



Design

- Designed to comply completely with the European standards as jacket and trousers.
- Provides employee comfort with quilted inner lining.
- Outer layer of the suit is an high strength, antistatic fabric that repels water and oil.
- Outer layer of the suit provides a stylish view with its rip-stop weaving shape.
- Cuffs are made of 100% aramid knitted fabric.
- Cuffs and neck part are with adjustable non-flammable velcro.
- An additional piece is under the armpits to increase mobility.
- A non-flammable velcro for name tag is on the right chest of the suit.
- All sewing threads used on Firefighter Suits are 100% Aramid.
- There are double reflective tapes on arms and body part of the jacket.
- Zippers are metal, non-flammable and highly qualified.
- There is a flap within velcro made of outer layer fabric that covers the zipper.
- Flapped pockets are on both sides of the jacket ends, a radio pocket and a hook for the flashlight are on the left chest.
- Metal hooks for hanging gloves are on the left pocket.
- There are elastic hangers on trousers that do not disturb the personnel.
- Trousers are ergonomic and elastic.
- Trousers are designed with velcros and straps.
- Certificate information is on the label inside the suit.
- User's guide in four languages given with the suit.
- All Firefighter Suits are sent with red carrying bag.

FYRPRO® BODY SIZES

BODY SIZE	PERSON LENGTH (CM)	CHEST (CM)	WAIST (CM)	JACKET LENGTH (CM)
XS 46/48	158-164	80-88	68-76	82
S 46/48	164-170	88-96	76-84	83
M 50/52	170-176	96-104	84-92	84
L 54/56	176-182	104-112	92-100	85
XL 58/60	182-188	112-120	100-108	86
XXL 62/64	188-192	120-128	108-116	87
3XL 62/64	192-198	136-142	124-132	88
4XL 62/64	192-196	120-128	132-142	89

TOLERANCE ± % 2

Complementary Products

FYRHOOD® 50 KNITTED FIRE HOOD (BALACLAVA)	CHIBA TOP RESCUE FIREMAN GLOVE	PENKERT BASIC GRIP SHORT FIREMAN GLOVE	PAB FIRE COMPACT FIREMAN HELMET	PAB FIRE HT-04 FIREMAN HELMET	LONGSTONE LEATHER FIREMAN BOOTS	ETCHE RUBBER FIREMAN BOOTS	3M SCOTT SIGMA II TYPE 2	FIREMAN BELT	JUMPING SHEET



İŞÇİ SAĞLIĞI TECHİZATI
www.ist.com.tr

+90 312 384 13 00

+90 312 341 73 03

📍 Ostim Mah. İvedik OSB 31. Cad. 2269.Sk No:42 Yenimahalle 06374, Ankara, Türkiye

✉ info@ist.com.tr

🌐 www.ist.com.tr

