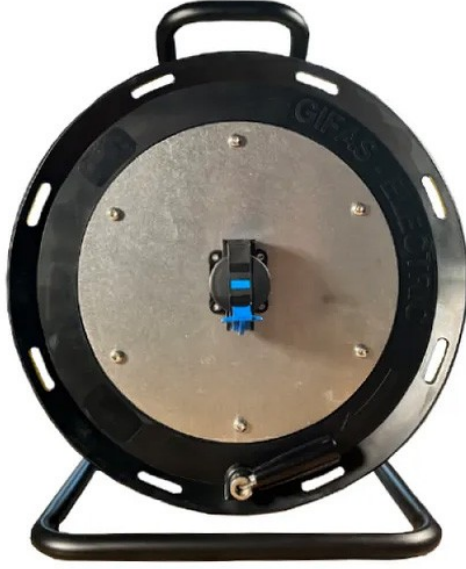


Wolf® ATEX Cable Reel



Certification & Compliance

- ATEX cable reels are designed for safe use in hazardous areas.
- They are marked to the 2014/34/EU ATEX equipment directive.
- Suitable for use in Zone 1 (Cat 2) IIC areas with a T6 temperature class.
- Ideal for flexible hazardous area lighting solutions.
- Works together with our hazardous area temporary lighting and power distribution products
- The cable reel operates from 230V or 110V, offering flexibility for different lighting Solutions
- Complies with EN IEC 60079-0, EN 60079-1 and EN 60079-7 standards.
- EX II 2 Ex db eb IIC T6 Gb

Technical Specifications

- Compact, solid hard rubber reel body with a flat steel frame.
- Internal brake system that doesn't create friction on the reel body.
- Fitted with ATX or CEAG plugs and sockets, and comes with 30m HOFR cable.
- Available with 110V or 230V input voltage options.
- Ideal for facilitating maintenance tasks.
- Alternative voltage, plugs, and sockets available upon request.

Standards



Ex-Proof (ATEX)



CE 0598

TECHNICAL DETAILS

MODEL	ATEX CABLE REEL LL-300/110/XXX		ATEX CABLE REEL LL-300/230/XXX	
PRODUCT DESCRIPTION	ATEX Cable Reel		ATEX Cable Reel	
CODE	II 2 G Ex de ICC* T6		II 2G Ex de IIC T6	
TYPE OF PROTECTION	"e" increased safety "d" flameproof		"e" increased safety "d" flameproof	
CLASSIFICATION (GAS	Zones 1 & 2 Gas Groups IIA, IIB IIC*		Zones 1 & 2 Gas Groups IIA, IIB IIC*	
TEMPERATURE CLASS (GAS)	T6		T6	
AMBIENT TEMPERATURE	-20°C to +40°C		-20°C to +40°C	
CERTIFICATE	PTB03ATEX1186		SEV18ATEX0130X	
MODEL NUMBER	LL-300/110/ATX	LL-300/230/ATX/30	LL-300/230/CEAG/30	LL-300/110/CEAG
VOLTAGE AND SOCKETS / PLUGS	110V		230V	
	ATX	ATX	CEAG	CEAG
INPUT CABLE	30m HOFR cable 2.5mm2		30m HOFR cable 2.5mm2	
SIZE	412mm x 314mm x 319mm (Height x Width x Length)		532mm x 353mm x 420mm (Height x Width x Length)	
WEIGHT	11.9Kg (with 30m cable)	13Kg (with 30m cable)	18Kg (with 30m cable)	12Kg (with 30m cable)

INGRESS PROTECTION	IP54	IP66
POWER RATING	110V 450W (wound) / 1700W (unwound)	230V 1000W (wound) / 3600W (unwound)



İvedik OSB Mh. 2269. Cd. No:42 PK.06374 Yenimahalle / ANKARA



0312 384 13 00



info@ist.com.tr